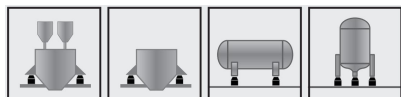




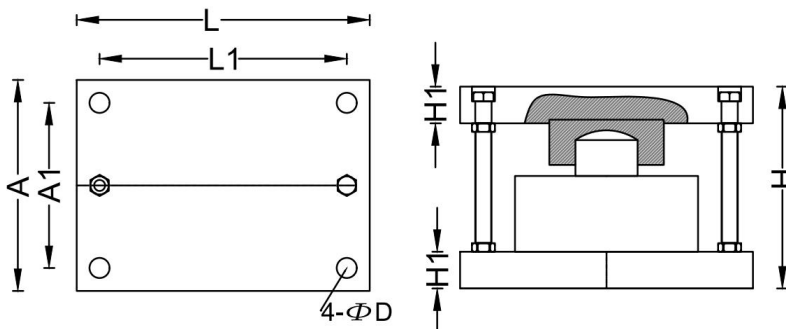
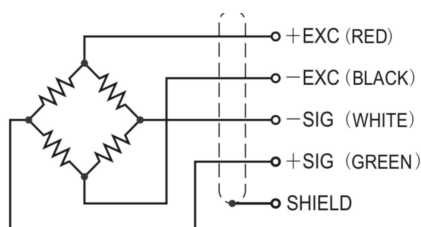
主要特点/Features

- 轮辐式模块
- 合金钢材质
- 高精度
- 高稳定性
- 安装简便、快速
- 适用仓储秤、配料秤、反应釜等

尺寸 Dimensions in mm:



接线/Wiring diagram:



量程/尺寸	A	A1	L	L1	H	H1	ΦD
1-7T	115	90	160	135	110	20	11
10-25T	160	125	200	160	160	25	13
30-50T	180	235	240	200	200	30	17
60-100T	240	200	300	260	240	35	17

技术指标/Specifications

额定容量/Rated Capacity	1 ~ 100T
精度等级/Accuracy level	0.05%FS
综合误差/Comprehensive error	±0.05%FS
输出灵敏度/Rated output	2.0±0.2mV/V
零点平衡/Zero balance	±1.5%FS
蠕变 (30 分钟) Creep (30 minutes)	±0.05%FS
补偿温度范围/Comp.Temp.	-10°C~40°C
工作温度范围/Working Temp. Range	-20°C~60°C
零点温度影响/Temp. Effect on zero	±0.03%FS/10°C
灵敏度温度影响/Temp. Effect on output	±0.03%FS/10°C
输入阻抗/Input impedance	750 ±10Ω
输出阻抗/Output impedance	700 ±3Ω
绝缘阻抗/Insulation impedance	2000MΩ
推荐激励电压/Recommended excitation	9~12VDC
安全过载/Safe overload	150%FS
极限过载/Ulimate Overload	200%FS
材质/Material	合金钢/Alloy steel construction
电缆线规格/Cable specification	6mm, 四芯屏蔽电缆线/4-wire shielded cable
防护等级/Protection level	IP66
认证/Authentication	CE、RoHS
电子数据/TEDS	可选/Optional